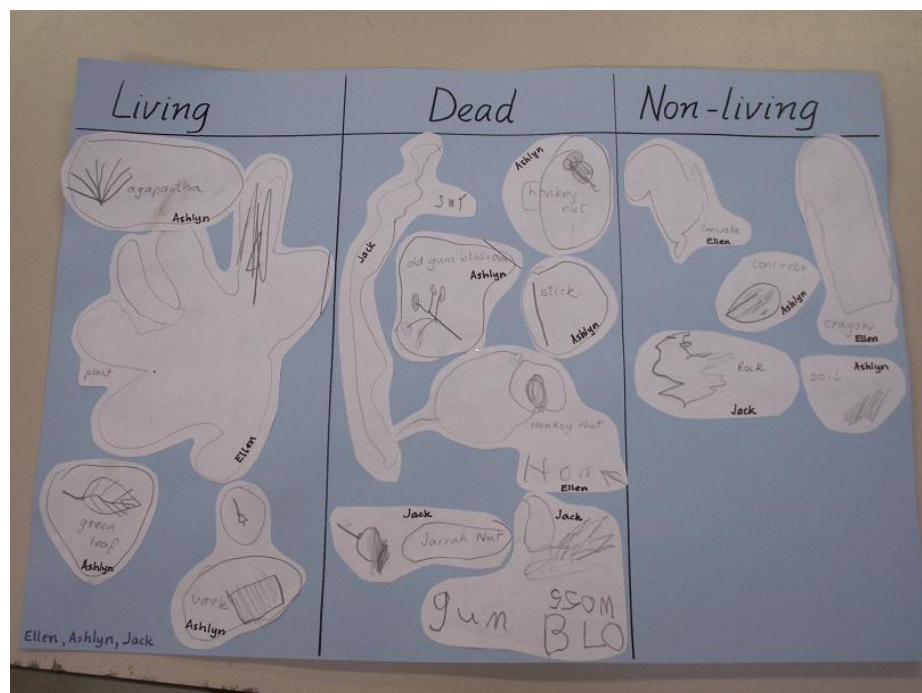


**Sawyers Valley Primary School, Western Australia,  
Room 1 Report: Square of Life, Autumn, 2007**

Children in Rooms 1, 2 and 3 at SVPS took part in the Square of Life Project. Here is the report for Room 1.

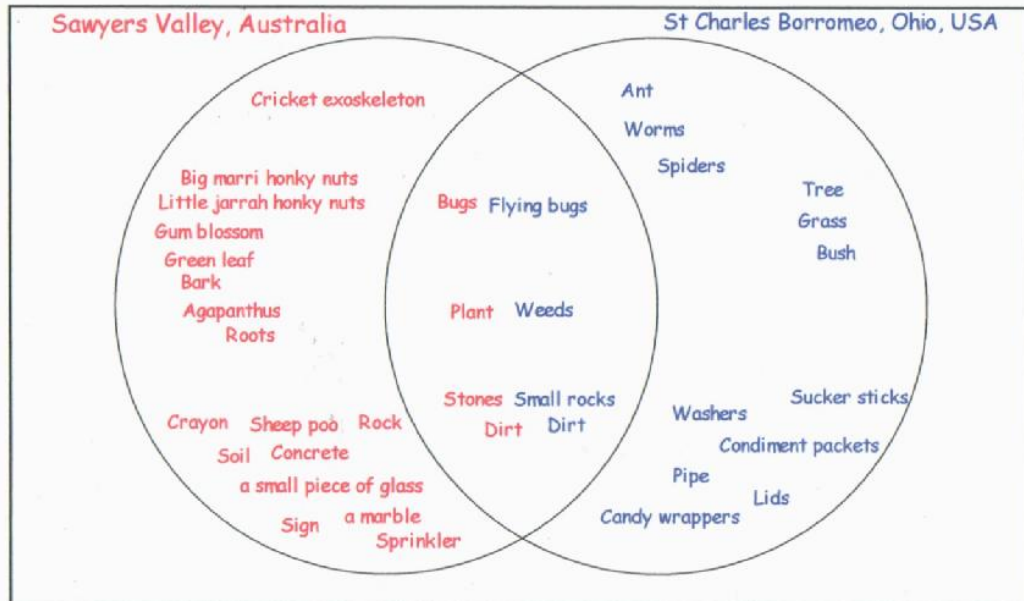
In Room 1 we worked in 6 groups. We constructed 6 x 1 metre squares and used pop sticks to help us investigate them. We drew pictures of things we found then cut the pictures out to make posters. This is a poster made by one group.



We chose to compare our results with those of St Charles Borromeo School in Parma, in the north of the state of Ohio in the United States of America. It was interesting to compare our results with a school that has such a different climate and is so far away from our own school. We used a Venn diagram to show what we found out.

First we listed all the things each school found. Then we used the Interactive White Board to sort them. We learned that both schools found bugs, plants or weeds and stones or small rocks. Both schools found different kinds of rubbish which belonged in the bin, not in a school yard! Sawyers Valley children think that they had ants and spiders too, but they did not take notice of them. It would be interesting to know what kinds of trees and bushes grow in Ohio. Here is our Venn Diagram.

## Room 1 Square of Life Report

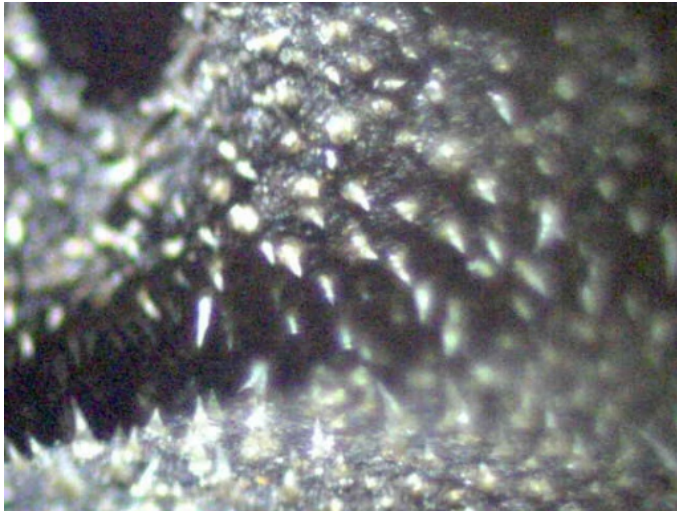


Room 1 enjoyed all parts of the project. They can now talk about living and non-living things and are learning to look at nature more closely. Of course the digital microscope was a great way to do this.

Here are some close-up photos of some of our finds. We used our words to describe them in interesting ways!

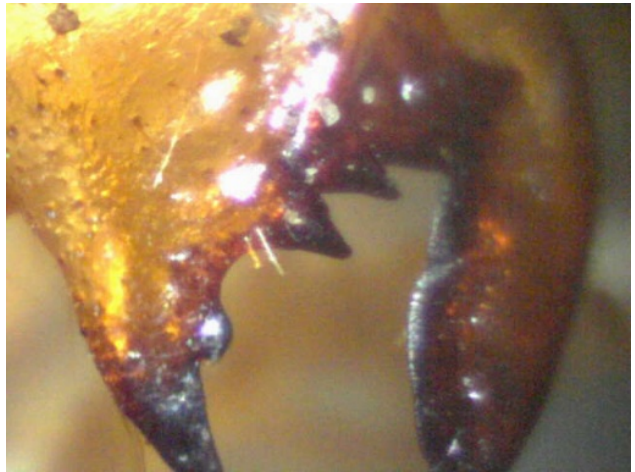


J found a gum leaf. What shapes can you see? Do you know what they are? I can see veins. I think I can see half a love heart. The dots have to be there for a reason. I think the dots are speckles. The dots are little oil glands. They have eucalyptus oil in them.



This is M's leaf. Is it dead or alive? Are there any clues? What is interesting about this leaf? It looks like a monster's mouth because it has an open line across the middle and the hole at the top looks like a nostril. The spikes are the teeth.

Z made a fascinating discovery! What is an exoskeleton? This is a cricket shell! It is like a really hard bone that sticks out of the body.



M, what is this? Is it living or non-living? I see a little bit of spiky stuff. I even see some grass. But I think it might be a drop of water. I see a little stick in the middle. I even see a little rock and dirt. It is sheep poo.

Thank you for looking at our report. We hope you enjoyed it.

